

Deloitte.



Phishing as a service

Your security is as good as your
weakest link – your employees

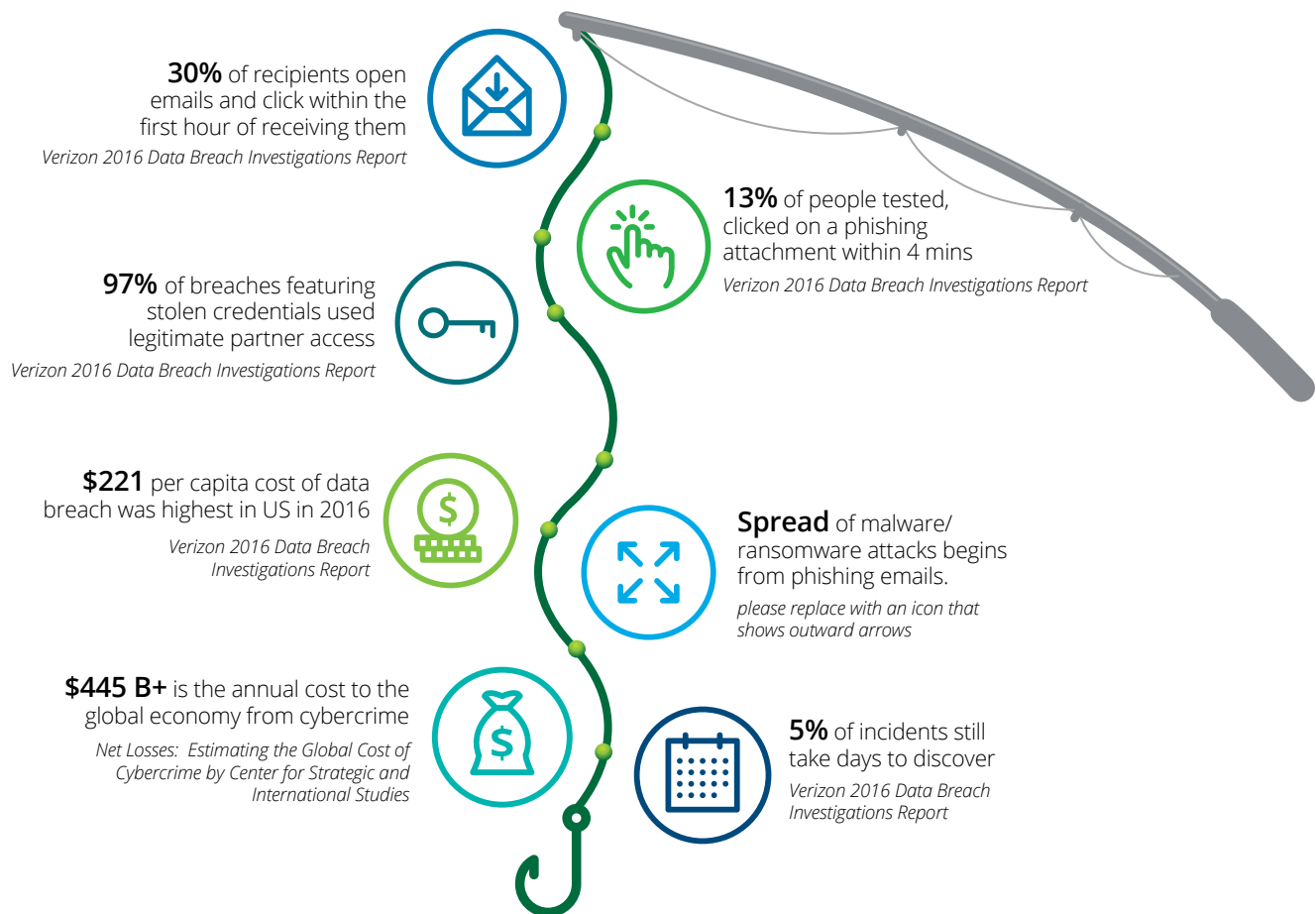
Phishing as a service

What is Phishing and Phishing Exercise?

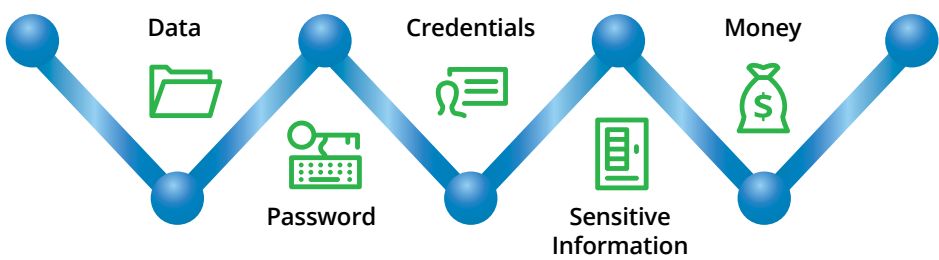
Phishing is an attempt to lure individuals into providing sensitive information over the internet in which targets are contacted by email by someone posing as a legitimate institution.

In Phishing Exercise, we assess cyber readiness and awareness of your organization through Phishing scenario.

Why do we need Phishing Exercise?



Scammers are after your:





We will provide you with:



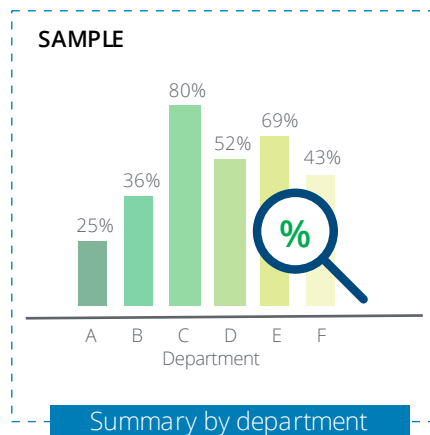
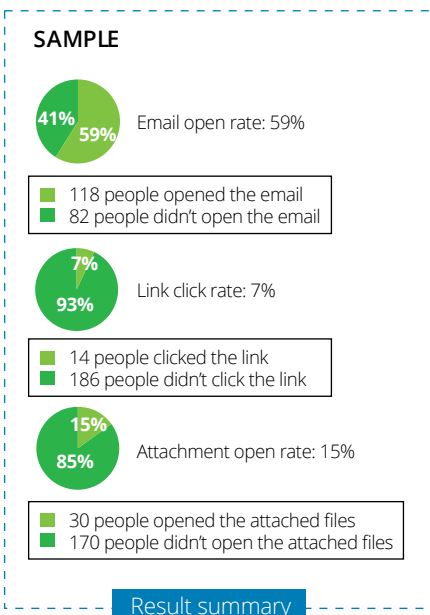
- Frequent statistic updates
- Tailor made phishing mails and websites
- Ad-hoc solutions

Our objectives:



- Determine the susceptibility of your employees against phishing attacks
- Heighten the security awareness of your employees.

For the statistic report, we present:



Email phishing workflow

Scenario identification	Intelligence gathering	Operation execution	Result presentation
<p>Initial reconnaissance</p> <p>Perform initial reconnaissance to identify test scenario key factors, plan changes in the environment facilities and potential employee target groups.</p>	<p>Cyber reconnaissance</p> <p>Use online sources such as company websites, social media presence, third party websites, to gather client-related information.</p>	<p>Mass phishing</p> <p>Obtain confidential or gain unauthorized access by sending mass-phishing emails to employees.</p>	<p>Result discussion</p> <p>Conference or face-to-face meeting with senior stakeholders to discuss critical findings, overall outcome and facilitate a Q&A session.</p>
<p>Mass phishing vs. Spear phishing</p> <p>Discuss and agree with the client on the type of e-mail phishing to be performed: mass phishing vs. spear phishing.</p>	<p>Employee social media presence</p> <p>Gather employee information by browsing through employee social media profiles. When necessary, connect to employees via social media channels to obtain needed information.</p>	<p>Spear phishing</p> <p>Obtain information or gain unauthorized access by sending personalized spear-phishing emails to a specific group of employees. Additionally, the spear phishing scenario may include installing custom malware on the laptop/desktop.</p>	<p>Report</p> <p>A report delivered in a mutually agreed format and template, that includes a management summary, issues, recommendations and further steps.</p>
<p>Scenario(s)</p> <p>Combine information gathered to build up a set of scenarios. Discuss and agree with the client on the scenarios to be executed.</p>	<p>Mass phishing target(s) confirmation</p> <p>Identify and agree with the client on target employees.</p>	<p>Further exploitation</p> <p>Use phishing email and malware as a starting point to analyze the internal network as a stepping stone to the tactical network exploitation.</p>	<p>Awareness</p> <p>Increase the security awareness of employees through security lectures, workshops and demos.</p>
<p>Spear phishing target list</p> <p>Obtain from the client a list with employee email addresses to be targeted during the spear phishing attack.</p>		<p>Metrics</p> <p>Measure how many employees responded to the emails and test several aspects of user awareness such as willingness to give away passwords or personal information.</p>	

Email phishing workflow



Pre-engagement

- Confirmation of objective (flags)
- Confirmation of "target" distribution list



Engagement

- Simulate a 'phishing' attack against the agreed address list
- Demonstrate the relative success of the attack by collecting non-personally identifiable information for statistical purposes



Post-engagement

- Client Briefing/Presentation
- Phishing awareness workshop and e-learning

Contact us

SEA and Singapore

Thio Tse Gan

Executive Director,
SEA Cyber Risk Leader
+65 6216 3158
tgthio@deloitte.com

Edna Yap

Executive Director
+65 6531 5016
edyap@deloitte.com

Eric Lee

Executive Director
+65 6800 2100
ewklee@deloitte.com

Victor Keong

Executive Director
+65 6216 3222
vkeong@deloitte.com

Siah Weng Yew

Executive Director
+65 6216 3112
wysiah@deloitte.com

Jaffa Law

Director
+65 6216 3350
jalaw@deloitte.com

Leslie Moller

Director
+65 6800 2333
lesmoller@deloitte.com

Indonesia

Sigit Kwa

Associate Director
+62 21 2992 3100 Ext. 33548
skwa@deloitte.com

Malaysia

Megat Mohammad Faisal

Executive Director
+60 3 7610 8863
mkhirjohari@deloitte.com

Ho Siew Kei

Director
+603 7610 8040
sieho@deloitte.com

Philippines

Anna Marie Pabellon

Partner
+63 2 581 9038
apabellon@deloitte.com

Thailand

Parichart Jiravachara

Executive Director
+66 (0) 2034 0130
pjiravachara@deloitte.com

Pinyo Treepetcharaporn

Director
+66 (0) 2034 0000 Ext. 11946
ptreepetcharaporn@deloitte.com



Deloitte refers to one or more of Deloitte Touche Tohmatsu Limited, a UK private company limited by guarantee (“DTTL”), its network of member firms, and their related entities. DTTL and each of its member firms are legally separate and independent entities. DTTL (also referred to as “Deloitte Global”) does not provide services to clients. Please see www.deloitte.com/about to learn more about our global network of member firms.

Deloitte provides audit, consulting, financial advisory, risk advisory, tax and related services to public and private clients spanning multiple industries. Deloitte serves four out of five Fortune Global 500® companies through a globally connected network of member firms in more than 150 countries and territories bringing world-class capabilities, insights, and high-quality service to address clients’ most complex business challenges. To learn more about how Deloitte’s approximately 245,000 professionals make an impact that matters, please connect with us on Facebook, LinkedIn, or Twitter.

About Deloitte Southeast Asia

Deloitte Southeast Asia Ltd – a member firm of Deloitte Touche Tohmatsu Limited comprising Deloitte practices operating in Brunei, Cambodia, Guam, Indonesia, Lao PDR, Malaysia, Myanmar, Philippines, Singapore, Thailand and Vietnam – was established to deliver measurable value to the particular demands of increasingly intra-regional and fast growing companies and enterprises.

Comprising 290 partners and over 7,400 professionals in 25 office locations, the subsidiaries and affiliates of Deloitte Southeast Asia Ltd combine their technical expertise and deep industry knowledge to deliver consistent high quality services to companies in the region.

All services are provided through the individual country practices, their subsidiaries and affiliates which are separate and independent legal entities.